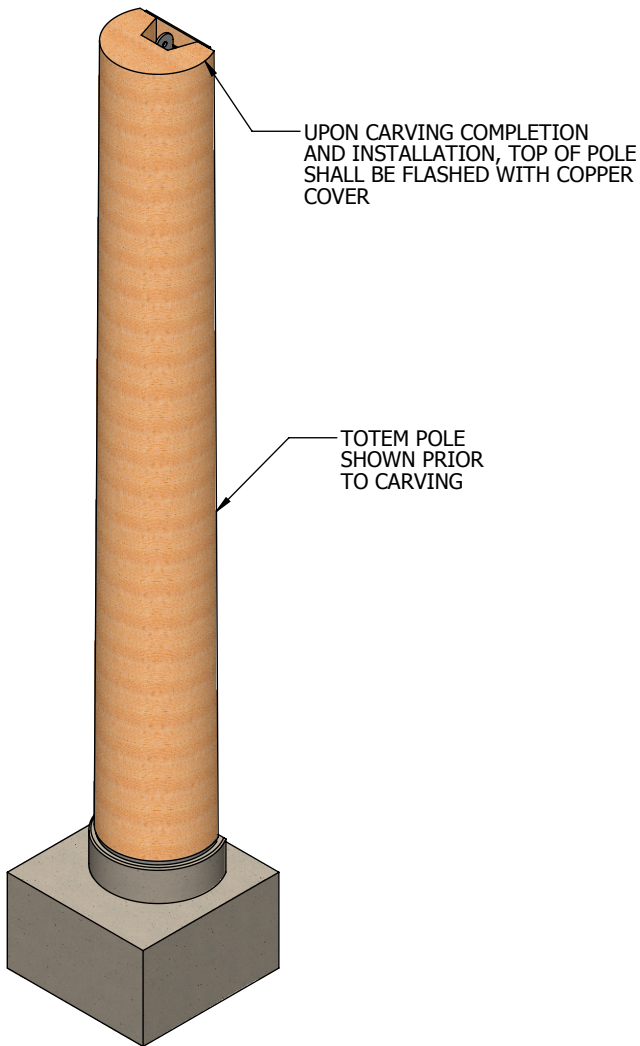


ITEM NO.	DESCRIPTION	Default/QTY.
1	CS Right Totem	1
2	CS Totem Concrete	1
3	CS Totem Steel	1
4	CS Totem Steel Base	1
5	CS Totem Back Cover	1
6	3/4" Hex Lag Screw 16" LG.	42
7	3/4" Flat Washer	42
8	3/4" Hex Bolt 2" LG.	1
9	CS Totem Rebar	1
10	CS Totem Receiver	1
11	3/4" Hex Lag Screw 10" LG.	7

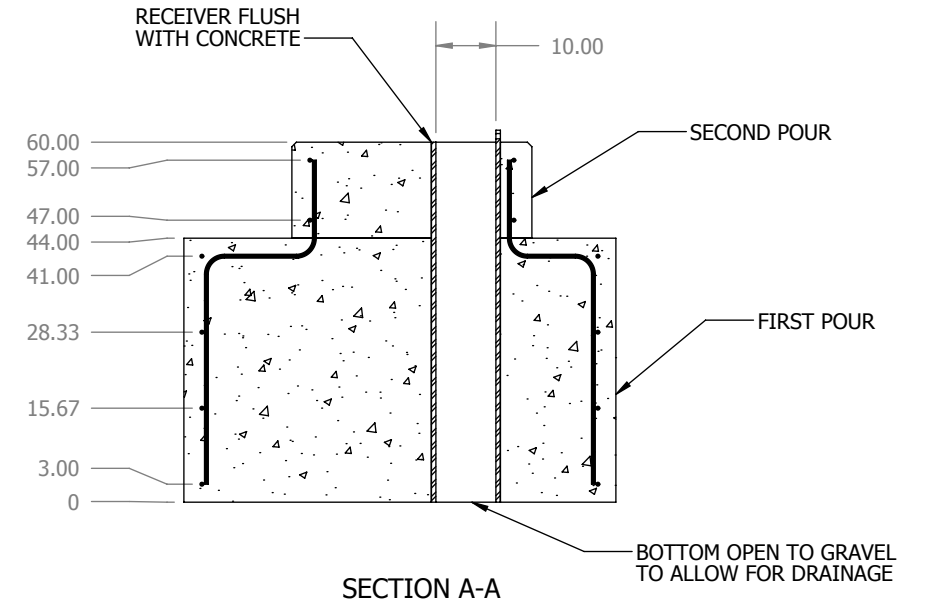
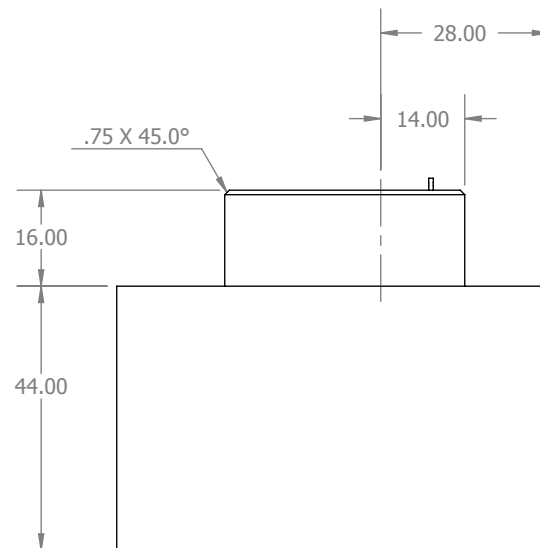
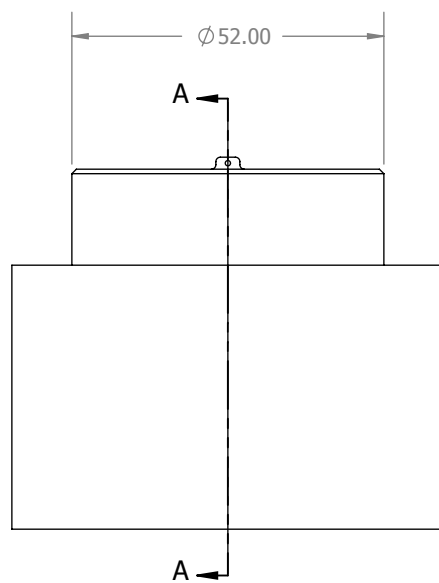
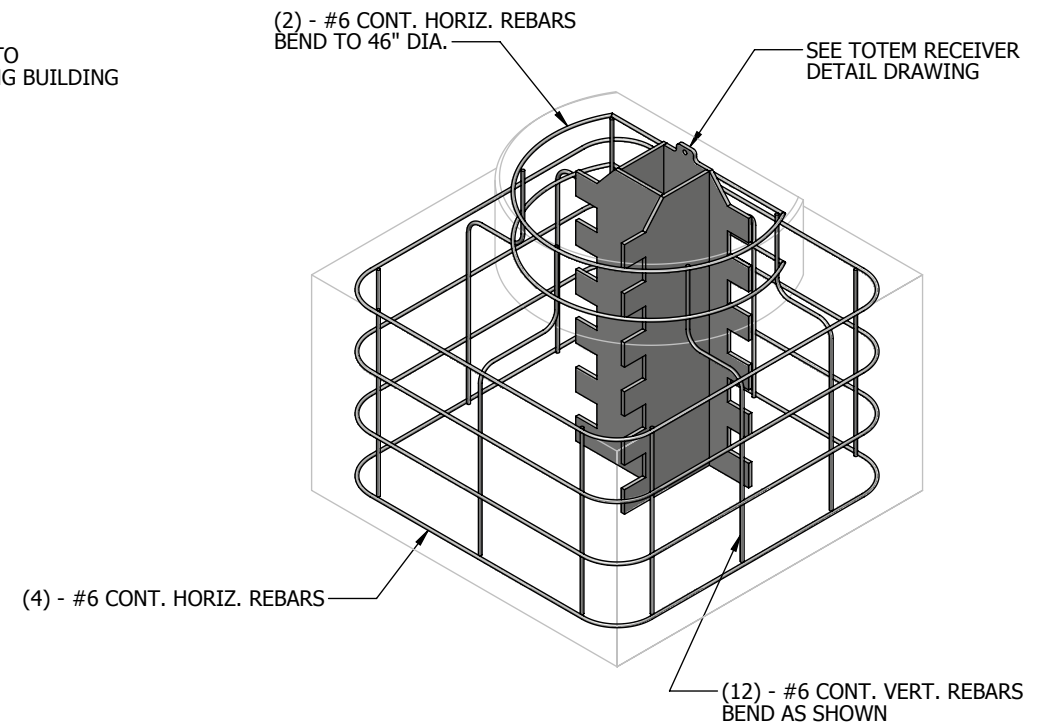
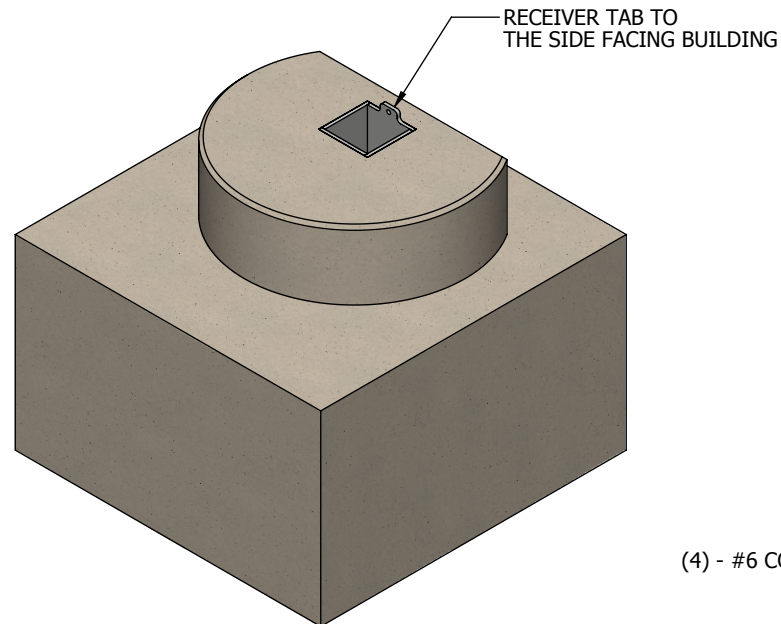
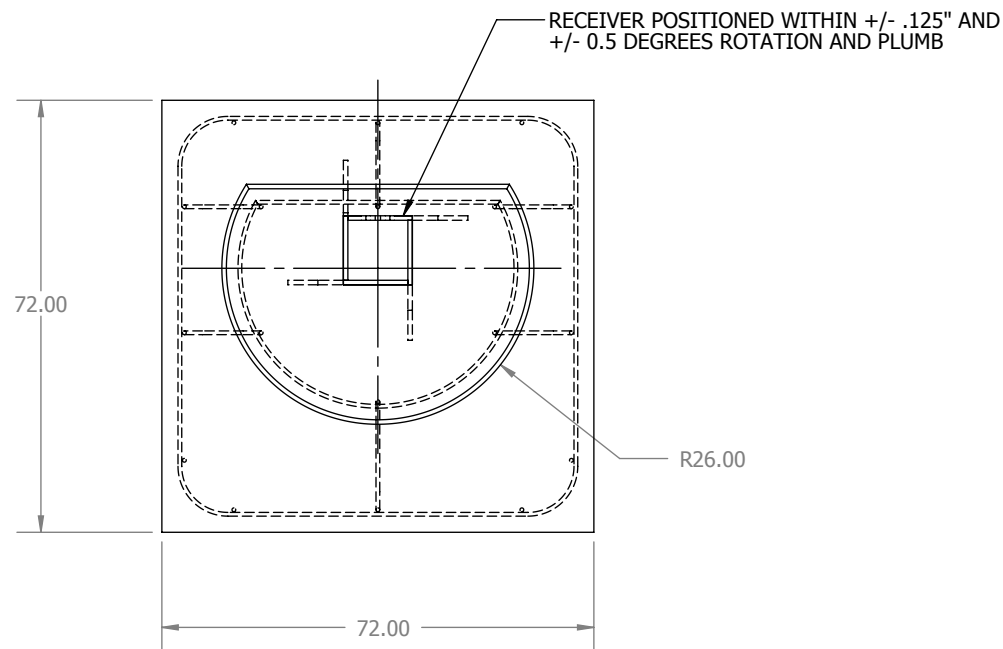


GENERAL NOTES:

1. CONCRETE BASE TO BE POURED WITH FOUNDATION
2. TOTEM POLE TO BE INSTALLED AFTER FACADE COMPLETION
3. ATTACH BACK COVER WITH STAINLESS STEEL SCREWS AND PAINT MATTE BLACK
4. SECURE TOTEM POLE WITH 3/4"X2" HEX BOLT


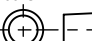
NOTE: RIGHT AND LEFT TOTEM ASSEMBLIES ARE INDENTICAL

Quinault Engineering 114 WEST QUINAULT ST. TAOLOAH, WA 98587 ph (360) 276-8215 fax (360) 276-4191		WEIGHT: 32176.33 LBS.	DIM. UNITS INCHES TOL. GROUP COARSE X. ± 0.250 X.X ± 0.125 X.XX ± 0.062 X.XXX ± 0.015 X° ± 2 1/X ± 1/8	DIMENSION UNITS UNLESS OTHERWISE NOTED 500/— THIRD ANGLE PROJECTION BREAK ALL EDGES .005-.035 MAX FILLET RADIUS 1/32
Carving Shed		RIGHT TOTEM ASSEMBLY	RIGHT TOTEM ASSEMBLY	
DRAFTING NO. 1		ENGINEER	1:72	8 SHEET 1 OF 2
RIGHT_TOTEM_ASSEMBLY				



CONCRETE NOTES:

1. CONCRETE MINIMUM COMP. STRENGTH 4000 PSI
2. ALLOW MIN. 14 DAY CURE TIME BEFORE INSTALLING POLE
3. REBAR SHALL BE PLACED A MIN. OF 3" FROM CONCRETE EDGE OR FACE
4. ALL REBAR SHALL BE GRADE 60
5. BACKFILL WITH GRAVEL AND FINISH WITH RIVER ROCK

<div>Quinault Engineering</div> <div><div>114 WEST QUINAULT ST. TAHOLAH, WA 98587 ph (360) 276-8215 fax (360) 276-4191</div></div>	<div>WEIGHT:</div> <div>32176.33</div> <div>LBS.</div>	<div>DIM UNITS</div> <div>INCHES</div>	◀ DIMENSION UNITS UNLESS OTHERWISE NOTED	
		<div>TOL GROUP</div> <div>COARSE</div>	<div>500/</div> <div></div> <div>THIRD ANGLE PROJECTION</div>	
ALL INFORMATION CONTAINED IN THIS DRAWING IS PROPRIETARY TO, AND SHALL BE USED OR DISTRIBUTED ONLY WITH THE WRITTEN PERMISSION OF, QUINAULT INDIAN NATION. PRINTED COPIES OF THIS DOCUMENT ARE FOR REFERENCE ONLY.		<div>X. ± 0.250</div> <div>X.X ± 0.125</div> <div>X.XX ± 0.062</div> <div>X.XXX ± 0.015</div> <div>X° ± 2</div> <div>1/X ± 1/8</div>	<div>BREAK ALL EDGES .005-.035</div> <div>MAX FILLET RADIUS 1/32</div>	
Carving Shed		USED ON DWG: -		
Carving Shed Right Totem Assembly		<div>MODEL FILE NAME</div> <div>RIGHT_TOTEM_ASSEMBLY</div>	<div>MODEL REV</div> <div></div>	<div>DRAW FILE NAME</div> <div>RIGHT_TOTEM_ASSEMBLY</div>
		<div>ENGINEER</div> <div>NPW</div>	<div>DRAWN</div> <div>Engineer</div>	<div>SIZE</div> <div>1:32</div>
				<div>B</div> <div>SHEET 2 OF 2</div>
		<div>DRAWING NO.</div> <div>RIGHT_TOTEM_ASSEMBLY</div>		
		<div>REVISION LET CHECK IN #</div> <div>A</div>		
		<div>MFG IGNORE CHECK IN #</div>		

PRINTED: 8/22/2012 LAST SAVED BY: Administrator

DRAWING PATH: U:\QUINAULT CARVING SHED\SOLIDWORKS.CS\

CREATED: Wednesday, August 22, 2012 12:41:27 PM